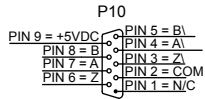


Omron E6B2- CWZ6C rotary encoder connection to port P10

LASER CONNECTIONS ARE RED  
 OPTIONAL CONNECTIONS ARE BLUE  
 GROUNDS ARE GREEN  
 110VAC IS VIOLET

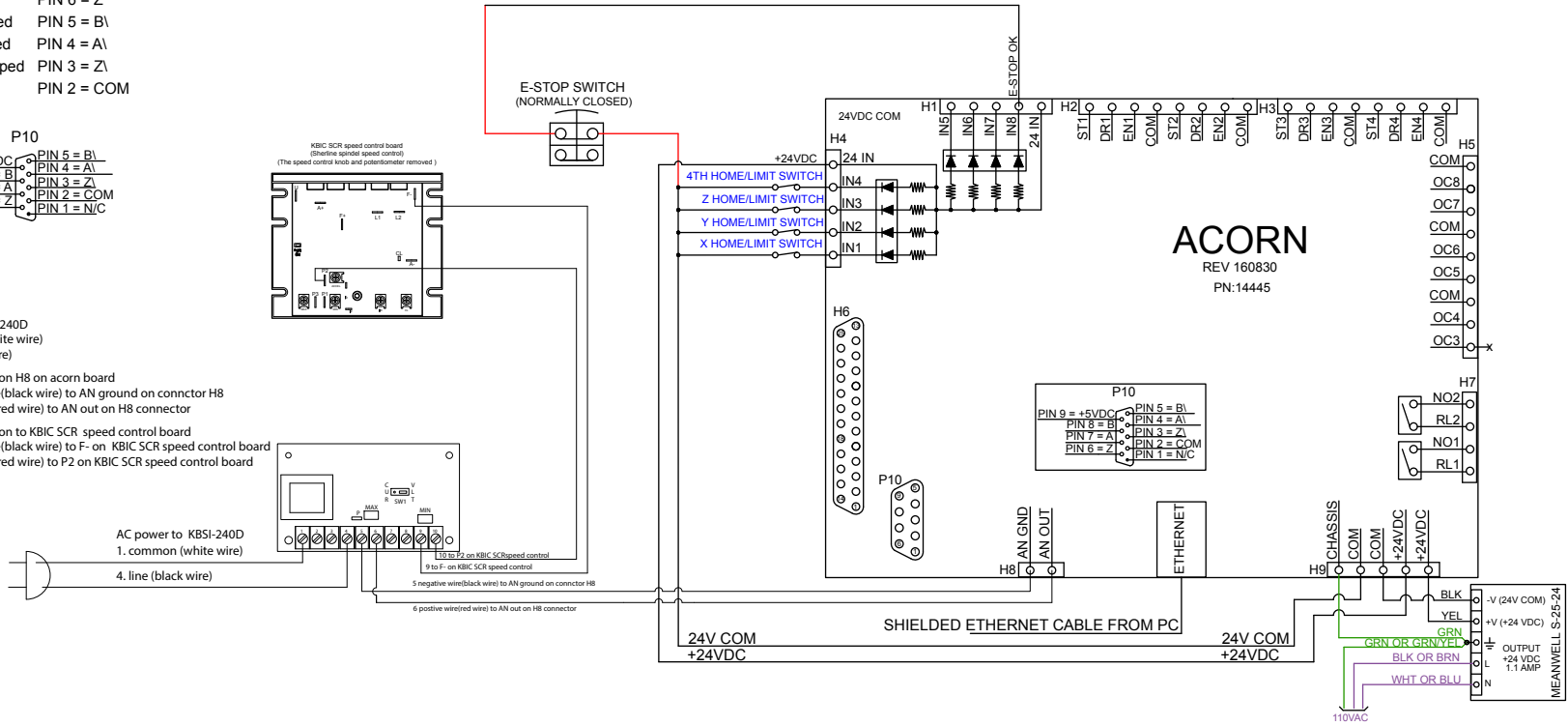
Encoder leads	Acorn P10 port
Brown	PIN 9 = +5VDC
White	PIN 8 = B
Black	PIN 7 = A
Orange	PIN 6 = Z
White striped	PIN 5 = B\
Black striped	PIN 4 = A\
Orange striped	PIN 3 = Z\
Blue	PIN 2 = COM



AC power to KBSI-240D  
 1. common (white wire)  
 4. line (black wire)

KBSI-240D connection H8 on acorn board  
 5. negative wire(black wire) to AN ground on connector H8  
 6. positive wire(red wire) to AN out on H8 connector

KBSI-240D connection to KBIC SCR speed control board  
 5. negative wire(black wire) to F- on KBIC SCR speed control board  
 6. positive wire(red wire) to P2 on KBIC SCR speed control board



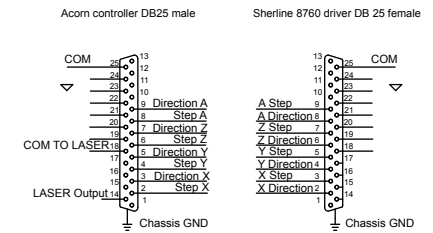
OUTPUT TO SHERLINE MILL

SHERLINE 8760 4-AXIS DRIVER BOX

PLEASE SEE ACORN DB 25 CABLE DIAGRAM

SHERLINE 8760 DRIVE BOX  
 POWER SUPPLY

NOTE: The Acorn DB25 male port can be remapped to match the DB25 female Sherline driver port (PIN 8760)



Acorn controller DB25 male TO Sherline 8760 driver DB 25 female  
 This is a cross over cable(pin cross over at the DB 25 female connection)  
 1. Pins 1,10,11,12,13,15,16,17 are not connected  
 2. Pin 14 is the laser output from the acorn controller to the M02 box  
 3. Pin 18 is the laser command output from the acorn controller to the M02 box  
 4. Pins 19 thru 25 are not connected between the DB25 male and DB25 female