



Sherline Products Lathe and Column Bed Quality

About the Quality of Sherline Products Lathe and Column Beds

Sherline customers, most of our parts are made from extrusion. The extrusions come in the basic shape of the parts that we are going to make. Sometimes there are imperfections in the extrusion. However, we finish machine all of the critical mating surfaces.

On the bed extrusion, the mating surfaces are the dovetail surfaces. These are the surfaces that make contact with the saddle. The mating parts do not make contact with the non-machined extruded surfaces of the bed. The dovetails are finish-ground flat within .001" and parallel to each other within .001" or less over the entire length of the bed.

Although these extrusion imperfections may be cosmetically unpleasing to the eye, they do not affect the overall accuracy or performance of the machine.

On full-size machines, these extrusion imperfections are filled with body putty and then painted over. We do not have that ability with our machines.

We ask that you bear this all in mind when you inspect your machine.

Below are some pictures of some of the extrusion imperfections that we have on our beds periodically. Again, these marks and scratches are on non-critical areas of the bed.



FIGURE 1—Example of an extrusion dent.

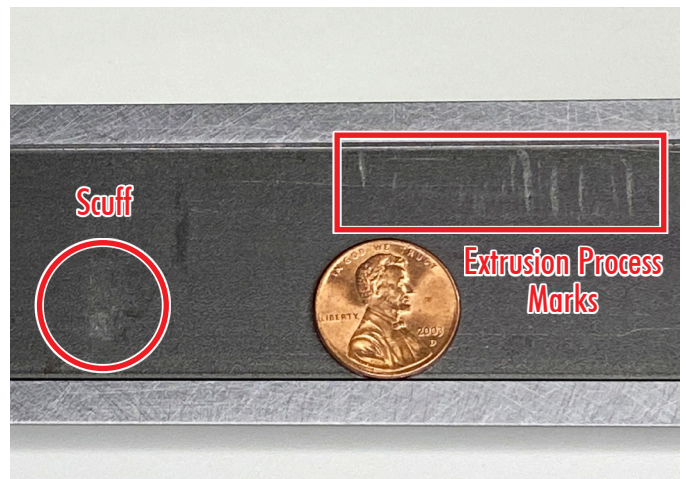


FIGURE 2—Scuff mark and extrusion process marks:

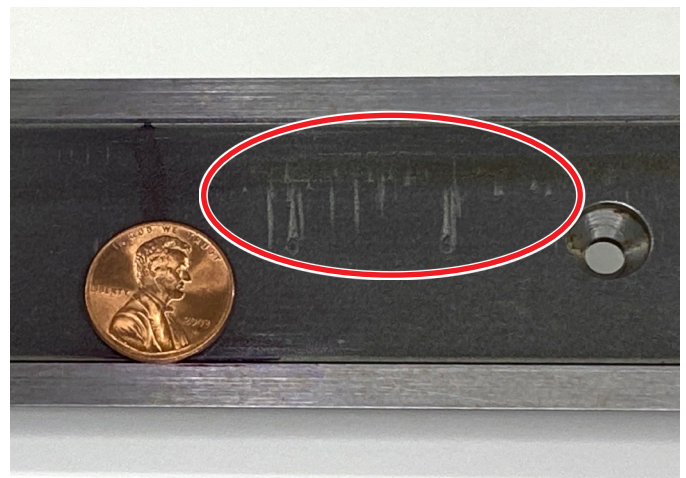


FIGURE 3—Extrusion process marks.

Thank you,
Sherline Products Inc.