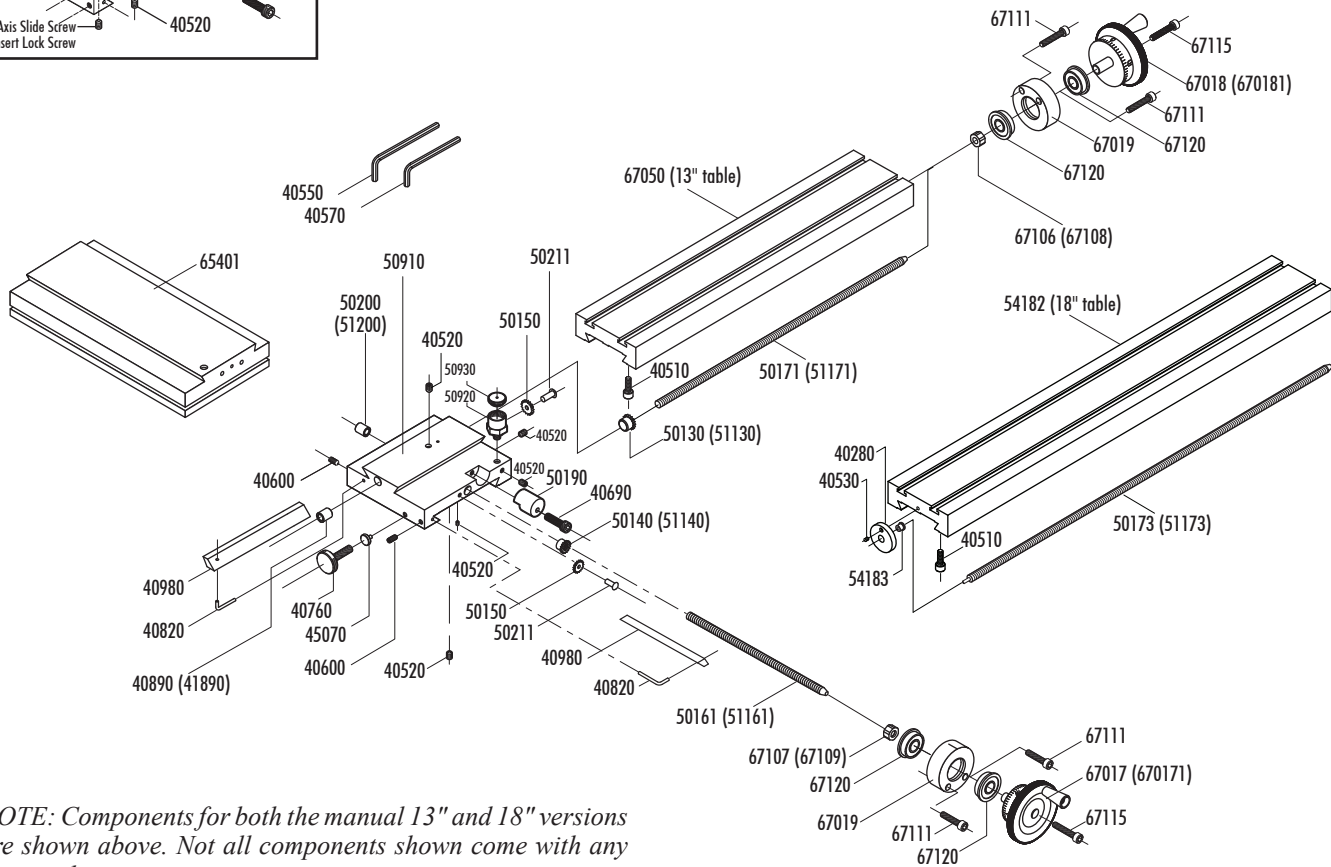
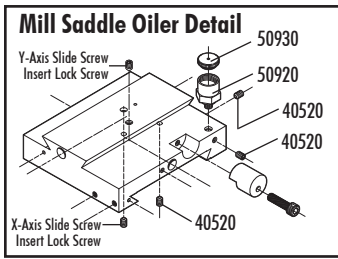


6540, 6540-18 MANUAL SLIDES—EXPLODED VIEW



NOTE: Components for both the manual 13" and 18" versions are shown above. Not all components shown come with any one machine.

Parts List

NO. REQ.	PART NO.	DESCRIPTION	NO. REQ.	PART NO.	DESCRIPTION
1	40280	Thrust collar (18" table only)	1	50173	18" X-axis leadscrew, inch (P/N 51173, metric)
5	40520	10-32 x 3/16" socket head cap screw	1	50190	Table lock
2	40510	10-32 x 3/8" socket head cap screw	1	50200	Y-axis slide screw nut, inch (51200, metric)
1	40530	5-40 X 3/8" socket head cap screw (18" table only)	2	50211	Button head socket head screw
1	40550	5/32" hex key	1	50910	Mill saddle
1	40570	3/32" hex key	1	54182	18" mill table
2	40600	10-32 X 1/4" Flat PT Set Screw	1	54183	18" Table leadscrew bushing
1	40690	10-32 x 3/4" socket head cap screw	1	65401	Industrial X/Y base
1	40760	Thumbscrew	1	67017	Y-axis 2" Industrial handwheel, inch (P/N 670171, metric)
2	40820	Gib lock	1	67018	X-axis 2" Industrial handwheel, inch (P/N 670181, metric)
1	40890	X-axis slide screw nut, inch (P/N 41890, metric)	2	67019	Industrial handwheel thrust collar
2	40980	Gib	1	67050	13" mill table
1	45070	Teflon® lock	1	67106	X-axis preload nut (RH), inch (P/N 67108, metric)
1	50130	X-axis anti-backlash nut, inch (P/N 51130, metric)	1	67107	Y-axis preload nut (LH), inch (P/N 67109, metric)
1	50140	Y-axis anti-backlash nut, inch (P/N 51140, metric)	4	67111	8-32 x 3/4" socket head cap screw
2	50150	Star gear	2	67115	5-40 x 7/8" socket head cap screw
1	50161	Y-axis leadscrew, inch (P/N 51161, metric)	4	67120	CNC preload bearing
1	50171	X-axis leadscrew, inch (P/N 51171, metric)			