

VIDEO INSTRUCTIONS AVAILABLE
For video instructions, please visit our
YouTube channel at <https://youtu.be/1zIAV6l4MB0>

SHERLINE
PRODUCTS
INCORPORATED 1974

Troubleshooting the Speed Control Unit

If you have connected your Sherline/MASSO controller to an existing speed control and it is not working, follow the instructions below.

First, it is imperative that the three wires are connected to the correct pins on the speed control board. See page two of the instructions (https://www.sherline.com/wp-content/uploads/2019/10/masso_speed_control_replace_inst.pdf) and this video (<https://youtu.be/1zIAV6l4MB0>).

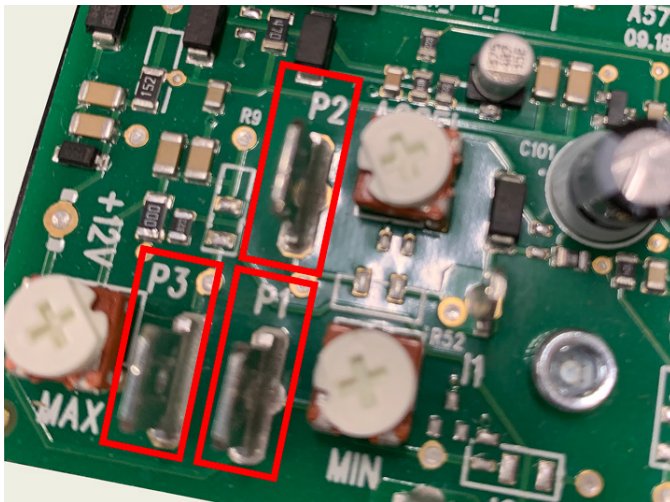


FIGURE 1—The red outlines show the S/C board connections.

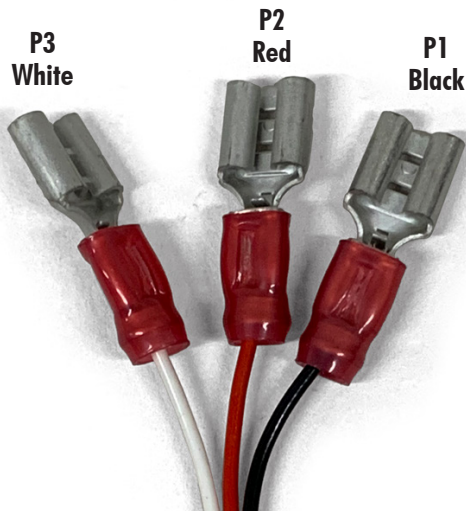


FIGURE 2—Shows the wire colors and their corresponding connections.

Next, you need to make sure that none of the wires are pinched excessively by the cord retainer.

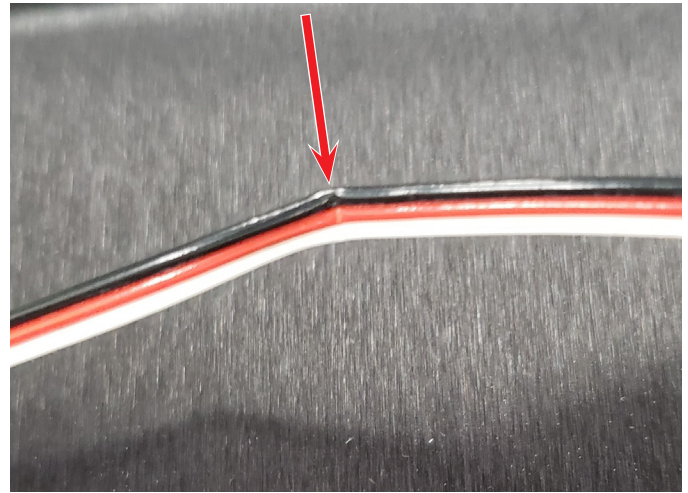


FIGURE 3—The red arrow shows the damage that can be done if the S/C wires get pinched. The red and white wires are bent, but the black wire is actually cut. See page 3 of the *Retrofitting the Speed Control Unit* instructions.

Unfortunately, you are going to have to take the speed control apart to check these two items.

After you pull the cord retainer out and check the wires for damage, then check that the three wires are connected to the correct terminals.

If everything looks good, set the speed control on the table and see if it works without putting everything back together.

If it does, turn the power off. Then put it all back together (leaving a bit of slack in the control wires so they can move a bit when you put the cord retainer back in). Then see if it still runs.

If it doesn't run, there are two possibilities.

1. You have a broken wire (probably caused by the cord retainer insertion).
2. The connector on the speed control wires was put on incorrectly by us.

You can check the wire connector by disconnecting it and looking at the wires coming into the connector. One side

of the connector is square and the other side is rounded
(see Figure 4).

Black wire on the round side of the connector.

White wire in the middle.

Red wire on the square side.

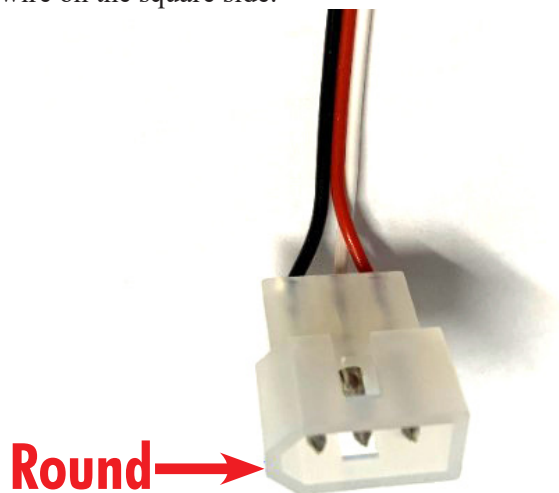


FIGURE 4

In both of these cases (pinched/broken wire or improper connector assembly), we can send you a new (inspected), speed-control wire harness.

Thank you,
Sherline Products Inc.