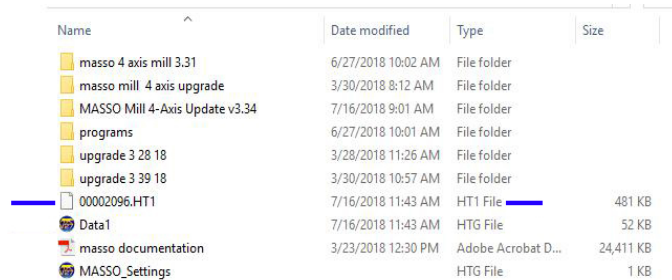




# Sherline/MASSO Software Upload Instructions

1. Delete the file with the suffix “.HT1” from the flash drive; from this point on, we will describe this file as “00002096.HT1” wherein the number 00002096 is an arbitrary file number.

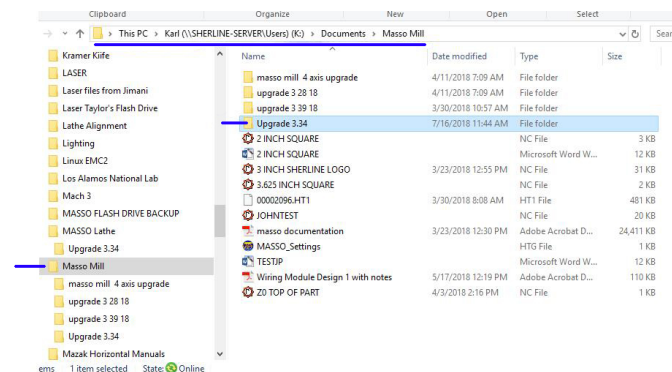
**NOTE:** Whenever MASSO reads the 00002096 file for an upgrade, it changes the file to 00002096.HT1 so it can’t be read again. If your flash drive has not been used to do the upgrade, then the file will still be 00002096. You must remove any file that has .HT1 in it, in order to load the latest upgrade file in it’s place.



Name	Date modified	Type	Size
masso 4 axis mill 3.31	6/27/2018 10:02 AM	File folder	
masso mill 4 axis upgrade	3/30/2018 8:12 AM	File folder	
MASSO Mill 4-Axis Update v3.34	7/16/2018 9:01 AM	File folder	
programs	6/27/2018 10:01 AM	File folder	
upgrade 3 28 18	3/28/2018 11:26 AM	File folder	
upgrade 3 39 18	3/30/2018 10:57 AM	File folder	
00002096.HT1	7/16/2018 11:43 AM	HT1 File	481 KB
Data1	7/16/2018 11:43 AM	HTG File	52 KB
masso documentation	3/23/2018 12:30 PM	Adobe Acrobat D...	24,411 KB
MASSO_Settings		HTG File	1 KB

FIGURE 1—The blue markers indicates the file to delete from the USB flash drive.

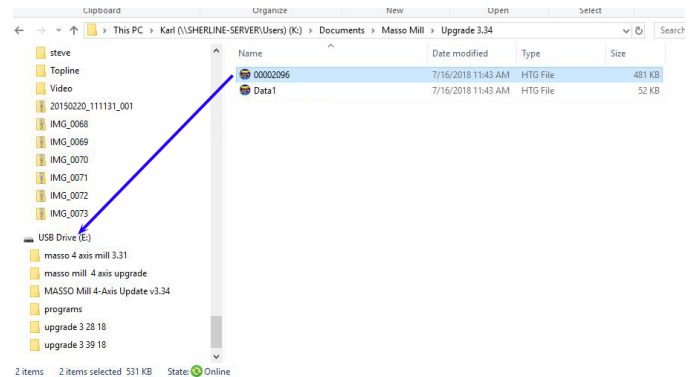
2. Open the most recent machine upgrade software folder on your PC (in this case, it is “3.34”).



Name	Date modified	Type	Size
masso mill 4 axis upgrade	4/11/2018 7:09 AM	File folder	
upgrade 3 28 18	4/11/2018 7:09 AM	File folder	
upgrade 3 39 18	3/30/2018 10:57 AM	File folder	
Upgrade 3.34	7/16/2018 11:44 AM	File folder	
2 INCH SQUARE		Microsoft Word W...	3 KB
3 INCH SHERLINE LOGO	3/23/2018 12:55 PM	NC File	31 KB
3.625 INCH SQUARE		NC File	2 KB
00002096.HT1	3/30/2018 8:08 AM	HT1 File	481 KB
JOHNTST		NC File	20 KB
masso documentation	3/23/2018 12:30 PM	Adobe Acrobat D...	24,411 KB
MASSO_Settings		HTG File	1 KB
TESTIP		Microsoft Word W...	12 KB
Wiring Module Design 1 with notes	5/17/2018 12:19 PM	Adobe Acrobat D...	110 KB
20 TOP OF PART	4/3/2018 2:16 PM	NC File	1 KB

FIGURE 2

3. Load the 00002096 file onto the flash drive’s Main Directory; do not load them into a folder on the flash drive or the controller will not read them (see Figure 3).



Name	Date modified	Type	Size
00002096	7/16/2018 11:43 AM	HTG File	481 KB
Data1	7/16/2018 11:43 AM	HTG File	52 KB

FIGURE 3—The blue arrow indicates the file to move onto the Main Directory of the flash drive.

4. Put the flash drive in the MASSO controller.
5. Turn on the power.
6. Wait for the load bar to reach 100%.
7. Turn the power off/on.
8. Type in the password (SP).
9. Press the E-stop on/off.
10. F1-Set up:
  - A. Password (- - - -)

Function Settings
Homing
Spindle
General Settings
Lubrication
Tool Changer
X - Axis
Y - Axis
Z - Axis
A - Axis
Auto Tool Zero
Save & Load Calibration Settings

Inputs	Function	Invert	Status
Estop	EStop	No	High
Encoder	Signal - A	No	Low
Encoder	Signal - B	No	High
Encoder	Index: 0, Pos: 1	Yes	Low
MPG	Dial Signal - A	No	Low
MPG	Dial Signal - B	No	Low

#### Admin Password

Password

\*\*\*\*

☐ Change Password

Enter password & press enter

MPG	Resolution 1	No	Low
MPG	Resolution 2	No	Low
MPG	Resolution 3	No	Low
Analog	Input 1		0.00v
Analog	Input 2		0.00v
Analog	Input 3		0.00v
Analog	Input 4		0.00v
Input 1	X - Home Sensor Input	Yes	Low
Input 2	Y - Home Sensor Input	Yes	Low
Input 3	Z - Home Sensor Input	Yes	Low

**MASSO**

MASSO Serial No: 5A-3010  
Core: v3.10  
Software: v3.40.12PID  
www.massoc.com.au  
support@massoc.com.au

**SHERLINE**

Sherline Products USA  
8541 CNC Mill  
www.sherline.com  
support@sherline.com  
1-800-541-0735

FIGURE 4—Password dialog box.

B. Save and load calibration settings (see Figure 5).

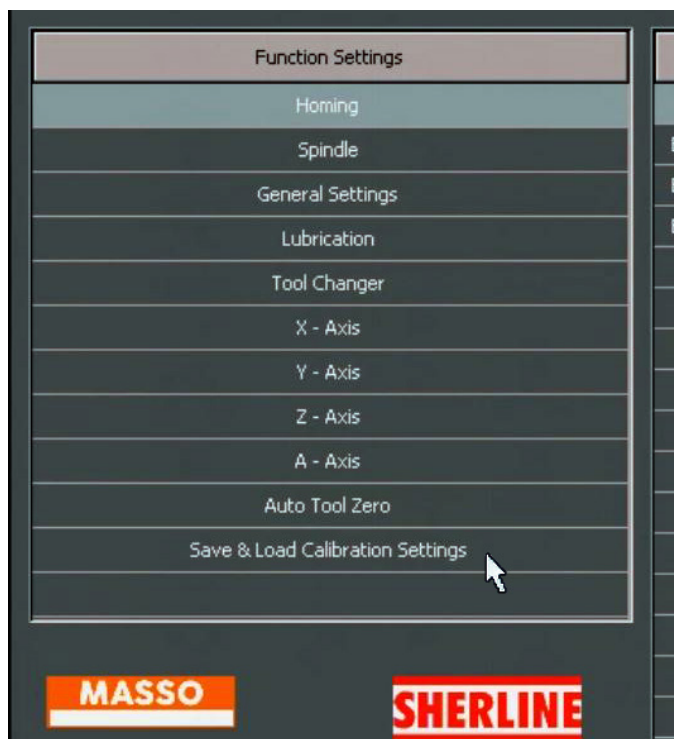


FIGURE 5

C. Click the Load from file button. This loads all of the machine settings into the MASSO board.

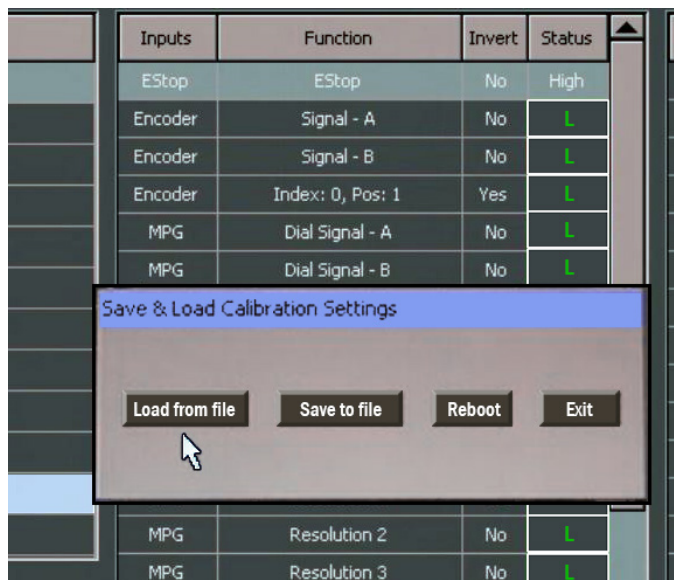


FIGURE 6

D. Click the Reboot button.

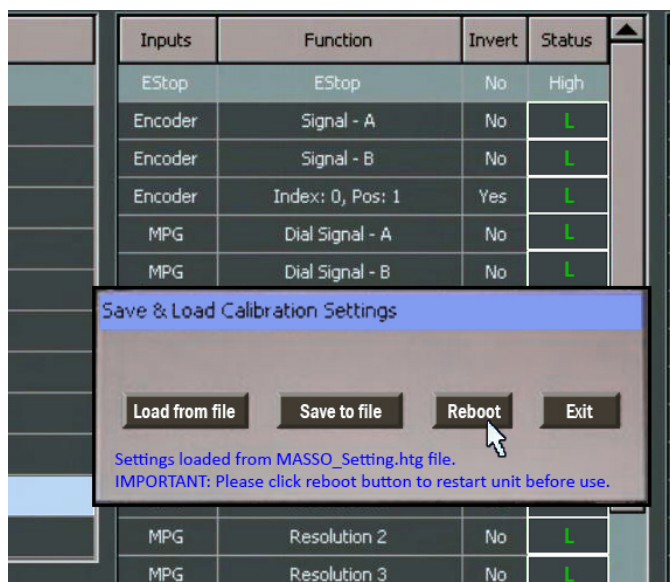


FIGURE 7

E. PW (---), E-stop on/off.

11. Ready to run.

### Saving Settings

1. Follow the above instructions 10-A, and B.
2. Then on the "Save and Load Calibration Settings," choose "Save to File," and then click "Exit."
3. This will save all of your settings to the flash drive.

### NOTES:

1. The Settings and the software upgrades are separate files. When you save a new software upgrade to the flash drive, it doesn't affect the settings file. As long as you save your settings file, they will still be on the flash drive for future software upgrades.
2. When you first turn on the controller, the Serial No for the controller board will show in the top right corner of the screen (see Figure 8).



FIGURE 8

3. When the controller command screen comes up, the current software that is on the controller will show in the top, right corner of the screen (see Figure 9). The example below shows, “Lathe v3.40.26PID.”

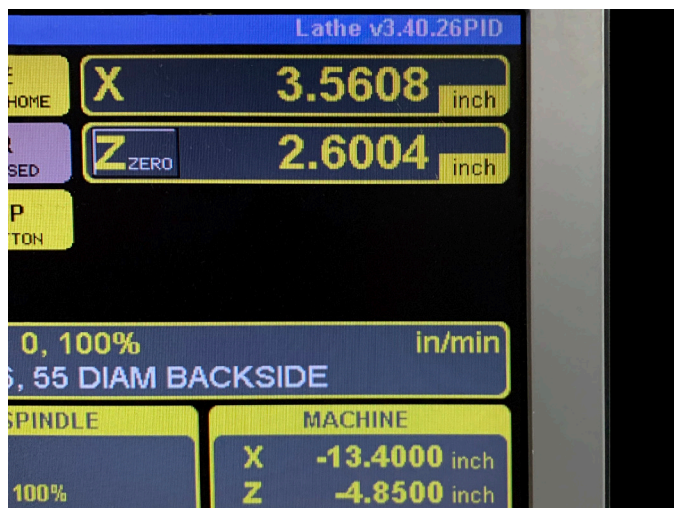


FIGURE 9—The current software version is displayed in the blue bar at the top, right corner of the monitor.

4. For your reference, the “Data1” file that is on the flash drive is the screen shot that displays the “Sherline powered by MASSO” upon startup.

Thank you,  
Sherline Products Inc.